



GROSSMONT-CUYAMACA  
COMMUNITY COLLEGE DISTRICT



# Regional and Local Career & Technical Education Efforts



Sunny Cooke



Mary Wylie



Christina Tafoya



Ann Durham



Kate Alder



Natalie Ray

# Framework for California's Community Colleges

DOING  
WHAT  
MATTERS  
FOR  
JOBS  
&  
THE  
ECONOMY



## Find Resources

### CLICK ON YOUR REGION

to find industry sectors and their navigators, regional consortia leaders, research data, regional and sector labor market reports, and more.

### CLICK HERE

to find California statewide industry and workforce resources, research data, regional and sector labor market reports, and more.

<http://doingwhatmatters.cccco.edu/ResourceMap.aspx>

Northern Coastal

Northern Inland

Greater Sacramento

North Bay

East Bay

Mid Peninsula

Silicon Valley

Santa Cruz & Monterey

Mother Lode

Central

Santa Cruz & Monterey

South Central

Los Angeles

Orange County

Inland Empire

San Diego / Imperial

### Macro Region

A



E



B



F



C



G



D



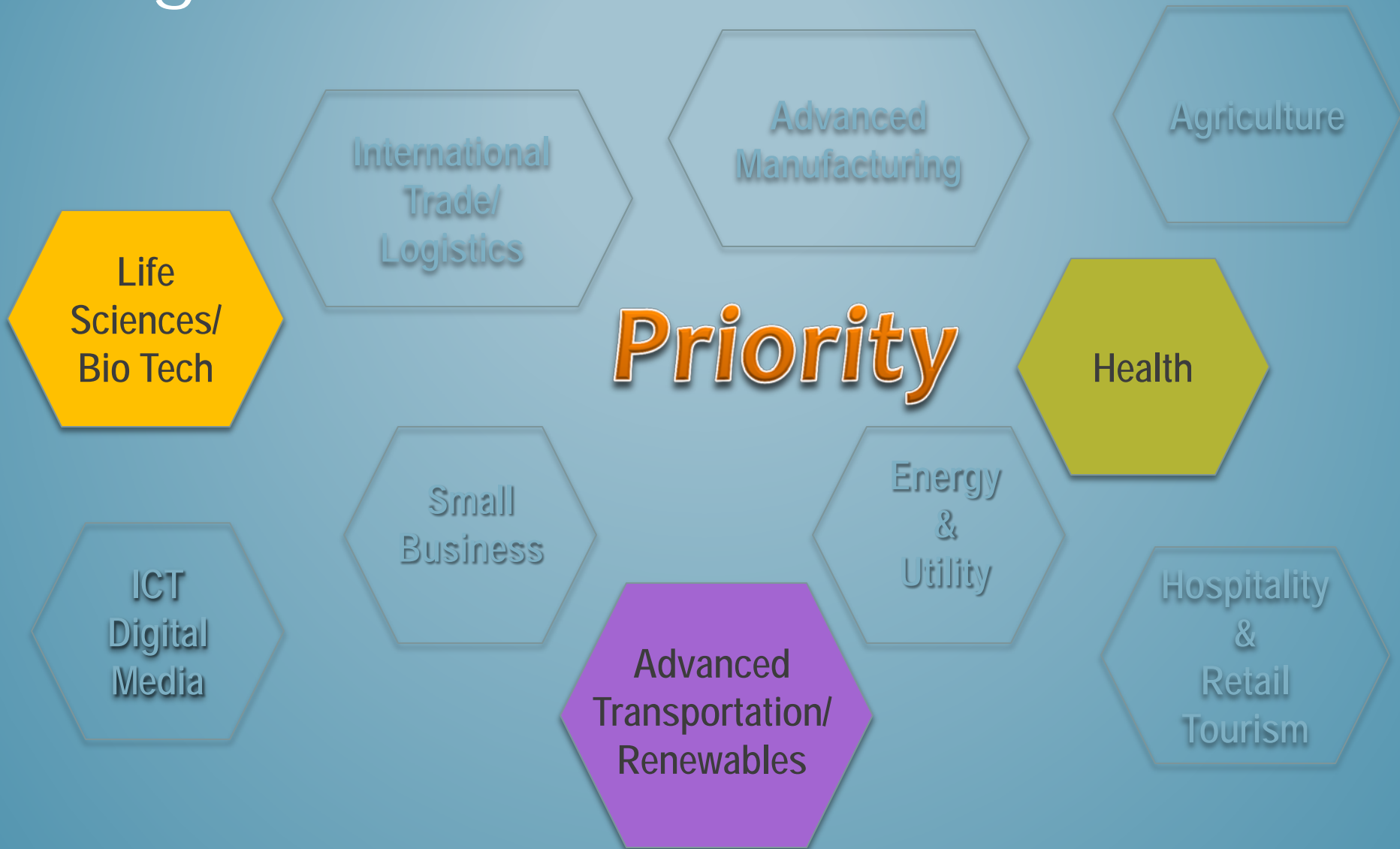
CALIFORNIA

# State Sectors



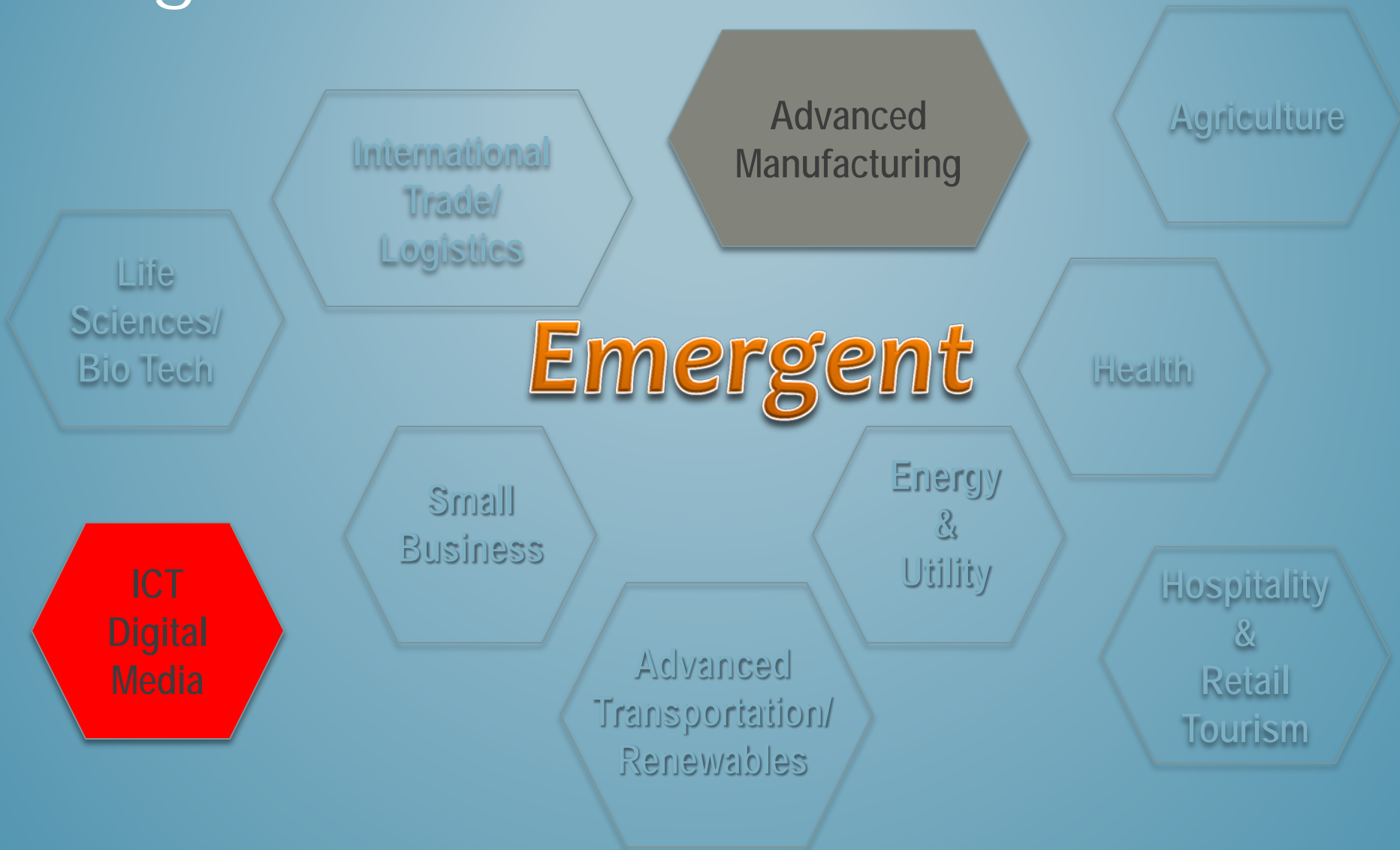
SAN DIEGO-IMPERIAL COUNTY

# Regional Sectors



SAN DIEGO-IMPERIAL COUNTY

# Regional Sectors



SAN DIEGO-IMPERIAL COUNTY

# Regional Sectors



REGIONAL  
"KEY  
TALENT"



Advanced Transportation/Renewables

*Greg Newhouse, Miramar College*

Life Sciences/Biotech

*Wendie Johnson, Miramar College*

Health

*Ann Durham, Grossmont College*

Advanced Manufacturing

*Trudy Gerald, San Diego City College*

ICT/Digital Media

*Rose LaMuraglia, San Diego City College*

International Trade/Logistics

*Victor Castillo, Southwestern College*

Small Business

*Joe Molina, MiraCosta College*





OTHER  
REGIONAL  
"KEY  
TALENT"

**Center of Excellence for Labor Market  
Research for San Diego Imperial**

***Zhenya Lindstrom, Chaffey College***

**1070 Pathways Regional Director**

***Natalie Ray, Grossmont College***

**Statewide Sector Navigator for Biotech**

***Sandra Slivka, Miramar College***

REGIONAL  
CONSORTIUM  
GOALS  
COMPLETED  
FOR  
2013-14



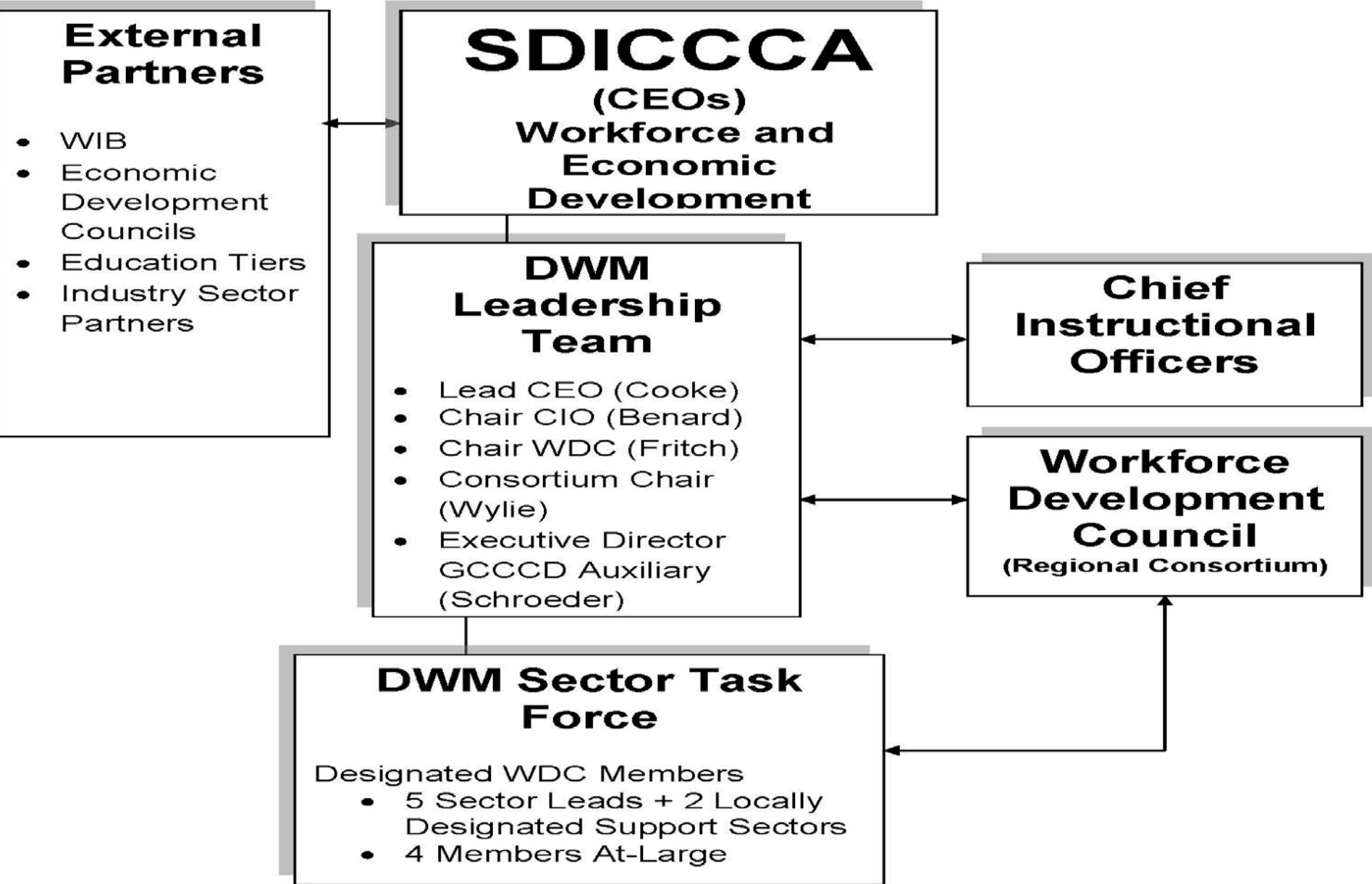
- ✓ *Regional structure implemented*
- ✓ *Resigned website*
- ✓ *Refined sector selection process*
- ✓ **Held regional sector advisory committees & completed LMI gap analyses**
- ✓ *Supported use of data/data collection to improve student success rates at the regional level*



## REGIONAL GOALS FOR 2014-15

- **Support curriculum alignment efforts of regional faculty facilitated by DSNs and industry**
- *Develop and implement regional campaigns to inform community colleges, industry, and workforce development partners on the DWM mission and local regional collaboration*
- **Facilitate the utilization of data for program improvement on a regional level, including use of**  
 [doingwhatmatters.cccco.edu/LaunchBoard.aspx](http://doingwhatmatters.cccco.edu/LaunchBoard.aspx)
- *Support regional career pathways, integrating 1070 and Pathway Trust key objectives*
- *Continue support of sectors, and partner to further research workforce development needs*

# Regional Leadership Structure for Workforce and Economic Development



## Workforce Development Council (WDC)



## A Working Arm of SDICCCA

- ❖ **CTE sub-committee of the SDICCCA**  
*Instructional Officers Standing Committee*
  
- ❖ *Addresses regional CTE/workforce development needs:*
  - ❖ *Approves and recommends **new, expanded, or revised CTE programs***
  - ❖ *Collaborates to **avoid program duplication***
  - ❖ *Evaluates labor market trends to **avoid overproduction of employees***
  
- ❖ **Equitable voting** for each of the nine colleges

# ROLE OF THE DESIGNATED CTE DEAN



- ❖ **Voting member** of WDC
- ❖ *Perkins leadership*
- ❖ *Mini-grants and other regional activities*
- ❖ CTE program **advisory committees**
- ❖ *Labor market trends and research to support **local program planning***
- ❖ **Connections with industry**
- ❖ *CTE grant opportunities*
- ❖ CTE and workforce development **initiatives**



## HEALTH SECTOR MAJOR OBJECTIVES 2014-2015

- ❖ **Professional development** for faculty
- ❖ **Incumbent worker training** for nursing and allied health professionals
- ❖ Partner with educational programs, Regional Consortium, and Workforce Investment Boards to **respond to industry needs and request**
- ❖ Facilitate **curriculum and program development and/or revision** to meet emerging workforce needs resulting from the Affordable Care Act
- ❖ Promote and support efforts to **increase the pipeline of baccalaureate- prepared nurses and allied health professionals**
- ❖ Facilitate **Welcome Back Center** programs and services to **refugee and immigrant healthcare professionals**

PUTTING  
IT  
TO  
WORK



*What does the DWM framework mean to the colleges?*

- ❖ **Resources**
  - Technical Assistance
  - Regional Activities
  
- ❖ **Event Support**
  
- ❖ **Common Metrics**

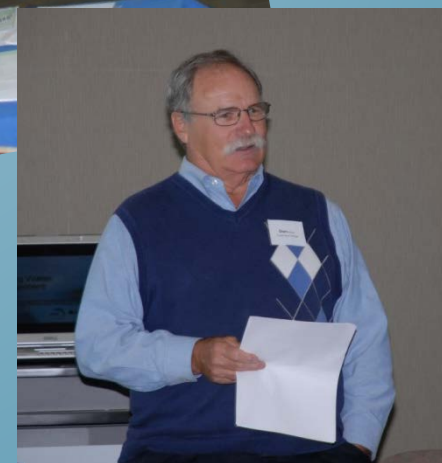


# SOUTHWEST REGIONAL WATER CONVERSATION



*Agriculture, Water,  
and Environmental  
Technologies*

**Sector Navigator  
Nancy Gutierrez**



# BRIDGING HIGH SCHOOL TO COLLEGE

*Advanced Transportation  
and Renewables Sector*  
**Deputy Sector Navigator**  
**Greg Newhouse**

**Auto Skills Day 2014**



# CTE



# AND THE COMMON METRICS

College	Programs	Current Year		
Cuyamaca College	Automotive Technology (094800)	2012-2013	<button>Refresh</button>	
Middle School Cluster				
Transition From Middle School to High School				
High School Cluster				
Transition from High School to College Cluster				
	5 Year Average	Current Metric	% Increase / Decrease	Trend
▶ <b>MP 8. Completed a bridge program between high school and college in a CTE pathway</b>				
	5 Year Average	Current Metric	% Increase / Decrease	Trend
▶ <b>MP 9. Completed college orientation and assessment as a first-time community college student who entered a community college CTE pathway</b>				
	5 Year Average	Current Metric	% Increase / Decrease	Trend
▶ <b>MP 10. Transitioned from a high school CTE pathway to a similar community college CTE pathway</b>				
	5 Year Average	Current Metric	% Increase / Decrease	Trend
▶ <b>MP 11. Transferred from a high school CTE pathway to a similar CSU, UC or private/independent university CTE pathway</b>				
	5 Year Average	Current Metric	% Increase / Decrease	Trend
▶ <b>MP 12. Completed a counselor-approved college education plan, for first-time community college students who enter a CTE pathway</b>				
	301	349	15.9 %	
	5 Year Average	Current Metric	% Increase / Decrease	Trend
▶ <b>MP 13. During high school, participated in an internship, work-based learning, mentoring, or job</b>				

- *Leading Indicators*
  - *Alignment with industry*
- *Momentum Points*
  - *Participate in a bridge program*

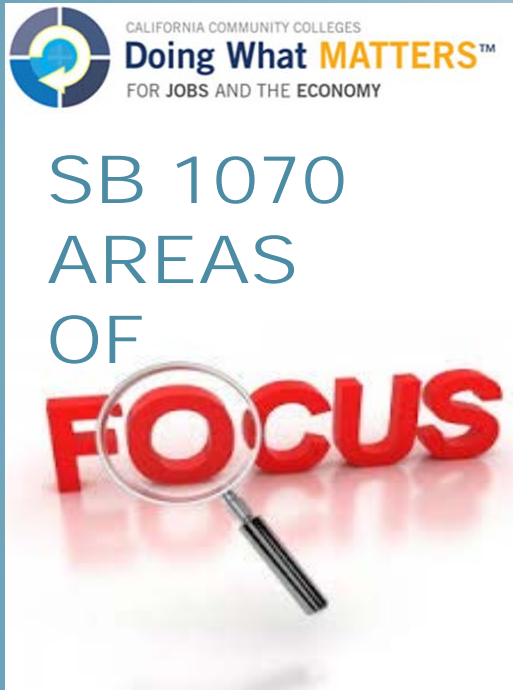
# Addressing both common and unique challenges in the region



- ❖ *Fiscal agent: Grossmont College*
  - \$1.4 million over three years
- ❖ \$17 million in CA (CCCCO)

*Purpose of the bill is to*

- improve **K-16 linkages**
- increase **readiness** of secondary students for postsecondary education
- increase **student success** and training in postsecondary education by developing career technical education **pathways between high schools and community colleges**



- ❖ Alignment of CTE curriculum
- ❖ Standardized articulation processes
- ❖ Career exploration and exposure
- ❖ College transition support
  - Matriculation
  - Education planning
- ❖ Data and tracking
  - Aligned metrics
    - LaunchBoard
    - Student Success Act



# CALIFORNIA CAREER PATHWAYS TRUST

- Establish or strengthen existing **regional collaborative relationships**
- Develop and integrate **standards-based academics with a career-relevant, sequenced curriculum** following industry-themed pathways that are aligned to **high-skill, high-wage, high-growth jobs, or emerging regional economic sectors.**
- Provide **articulated pathways** to postsecondary education aligned with **regional economies.**
- Leverage expertise and financial resources



# CALIFORNIA CAREER PATHWAYS TRUST

## FUNDING LEVELS

\$250 million in CA (Dept of Ed)

- Up to 10 @ \$15 million
- Up to 15 @ \$6 million
- Up to 15 @ \$600,000

## SUPPORT OF APPLICATIONS IN SAN DIEGO COUNTY

- 2 @ \$15 million
  - Fiscal agent: GCCCD
  - Fiscal agent: SDCOE
- 1 @ 6 million
  - Fiscal agent: Cajon Valley Middle



## REGIONAL INFRASTRUCTURE

- Curriculum alignment
  - CTE courses
  - Contextualized English, math, science
- Coordination of career exploration activities
- College transition advisors
- Data and tracking coordination

All colleges participate in region-wide interventions to promote career pathway success, with funding support from SB 1070 and Pathways Trust



FOCUSING ON  
STUDENT  
SUCCESS



- Exploration of careers and majors
  - Informed choices
- College readiness
  - English and math proficiency
- Supported transitions
  - Access: clear path to college
  - Education planning
  - Connection to programs and services
- Persistence
- Completion